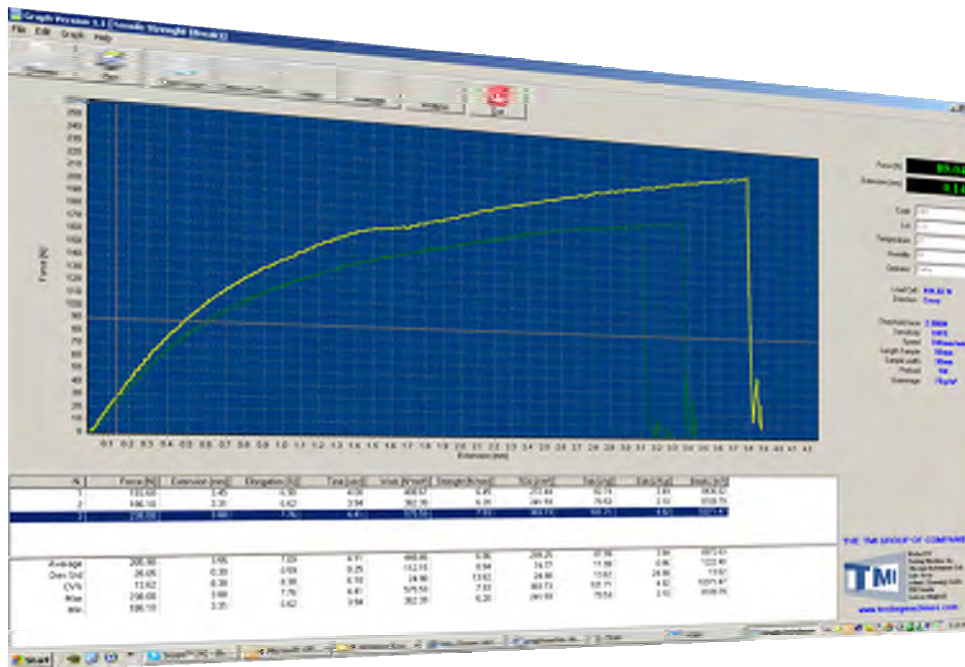


GraphMaster™



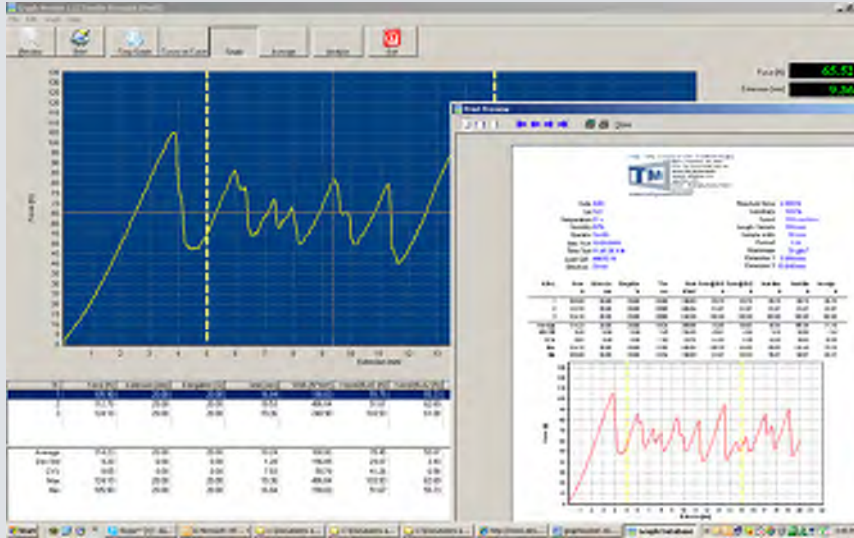
Capture test results and curve data and transfer directly to Excel®, Access® or Clipboard



KEY FEATURES

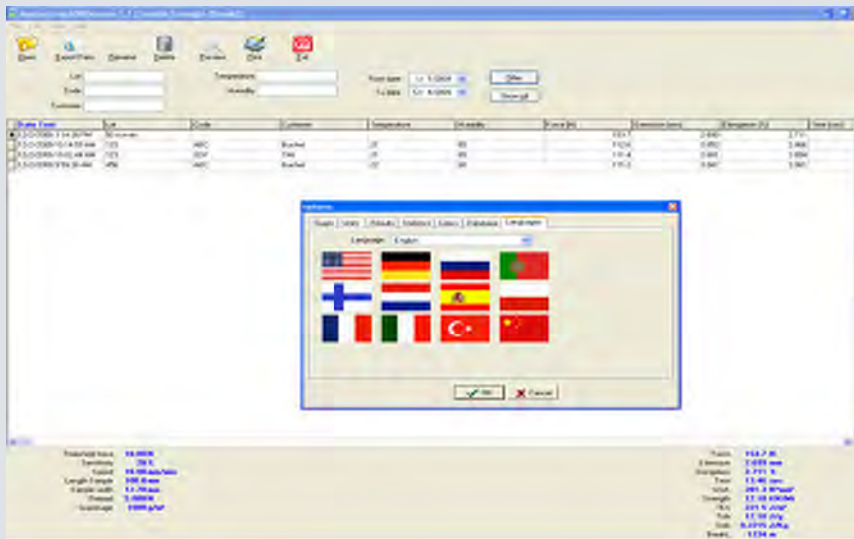
- Displays real-time test curve for visual analysis
- Selection of test results based on Industry Standards
- Preview and print sample parameters, calculated results, test curves and statistics
- Easy transfer of pertinent information to other application programs for advanced analysis
- Displays single, multiple and average test curves for a series of measurements
- Automatically saves test curve and result information

TESTING MACHINES INC.



SIMPLICITY IN GENERATING TEST REPORTS

GraphMaster test reports include single and multiple test curves, sample information and statistics. Previously saved operator and test information can be recalled and previewed for review and printout.



GRAPHMASTER AVAILABLE IN LANGUAGES

Dedicated to meeting the needs of the global community, GraphMaster is available in 12 languages. Additional languages can easily be added based on a translate procedure supporting Unicode.

PC Requirements:

Intel Pentium® P-IV 3Ghz or better (or equivalent alternative i.e. AMD™)

100 Mb free hard disk space, 9-pin RS-232 serial port or USB port with a USB to Serial converter (optional)

Supports –Windows 2000®, XP®, Vista® and 7®

Testing Machines Inc.
40 McCullough Drive
New Castle, DE 19720
Tel: (302) 613-5600
Fax: (302) 613-5619
Info@testingmachines.com

Büchel BV
t/a Messmer Büchel
Fokkerstraat 24, 3905 KV
Veenendaal, Netherlands
Tel: +31 (0)318 521500
Fax: +31 (0)318 540358

Lako Tool and Manufacturing Inc.
7400 Ponderosa Road
Perrysburg, Ohio 43552
Tel: (419) 662-5256
Fax: (419) 662-8225

Lawson Hemphill
1658 G A R Highway
Swansea, MA 02777
Tel: (508) 679-5364
Fax: (508) 679-5396
Information@lawsonhemphill.com

Adamel Lhomargy SARL
Z.A. de l'Habitat,
Bâtiment 6
Route d'Ozoir, 77680
Roissy en Brie, France
Tel: +33 (0) 1 64402910
Fax: +33 (0) 1 64409211

TMI Canada
40 McCullough Drive
New Castle, DE 19720
Tel: (302) 613-5600
Fax: (302) 613-5619
canada@testingmachines.com



www.testingmachines.com

www.lakotool.com

www.lawsonhemphill.com